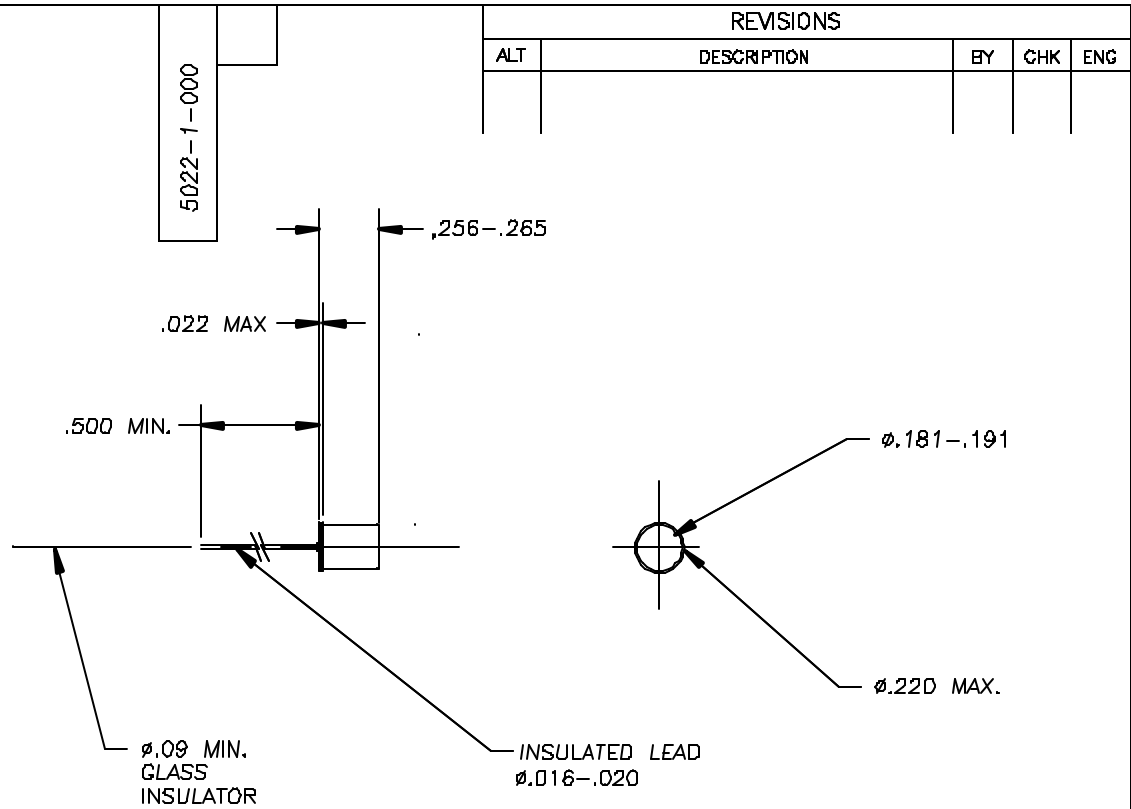


THIS DOCUMENT IS THE PROPERTY OF SELECT CONTROLS INCORPORATED AND IS CONVEYED WITH THE EXPRESS CONDITION THAT IT AND THE INFORMATION CONTAINED IN IT ARE NOT TO BE USED, DISCLOSED, OR REPRODUCED IN WHOLE OR IN PART, FOR ANY PURPOSE WITHOUT THE EXPRESS WRITTEN CONSENT OF SELECT CONTROLS INCORPORATED; AND THAT NO RIGHT IS GRANTED TO DISCLOSE OR SO USE ANY INFORMATION CONTAINED IN SAID DOCUMENT.

1. WEIGHT: 4.0 GRAMS MAXIMUM
2. SENSITIVE TO: TIP-OVER AND/OR TILT
3. CONTACT OPTIONS: NORMALLY OPEN OR NORMALLY CLOSED, CASE GROUND
4. CONTACT SPECIFICATIONS: RATING- 200mA @24 VDC
RESISTANCE- <350 OHMS
5. INSULATION RESISTANCE: 30 MEGOHMS @ 500 VDC
6. OPERATING CHARACTERISTICS:
VARIABLE-DEPENDENT ON MOUNTING ANGLE OR ORIENTATION
7. TEMPERATURE: OPERATING -65° TO +185°F
NON-OPERATING -65° TO +235°F
8. SWITCH IS HERMETICALLY SEALED
9. HEADER LEAD STRENGTH:
3 POUNDS MINIMUM AXIAL PULL WITHOUT DAMAGE



REVISIONS				
ALT	DESCRIPTION	BY	CHK	ENG

ITEM	NO.	PART NO.	DESCRIPTION	REMARKS	
BILL OF MATERIAL					
MATERIAL		TITLE			
FINISH		SWITCH TIP-OVER/TILT			
DO NOT SCALE DRAWING REMOVE BURRS, BREAK SHARP EDGES TOLERANCES UNLESS SPECIFIED: FRACTIONS: ±1/64 ANGLE: ±0.30° MACH FINISH: 125/ RFB DEC: .00 ±.010 DEC: .000 ±.005		NO. REQ'D	N/A	NO. REQ'D	N/A
		SCALE:	2:1	DESIGN: AHV 7/2/03	
		WEIGHT:	NOTED	APPROVED:	
		DRAWING NO.		REV	
		5022-1-000			
		DATE	SHEET	1 OF 1	

Select Controls Inc. 45-3 KNICKERBOCKER AVE. BOHEMIA, N.Y. 11716