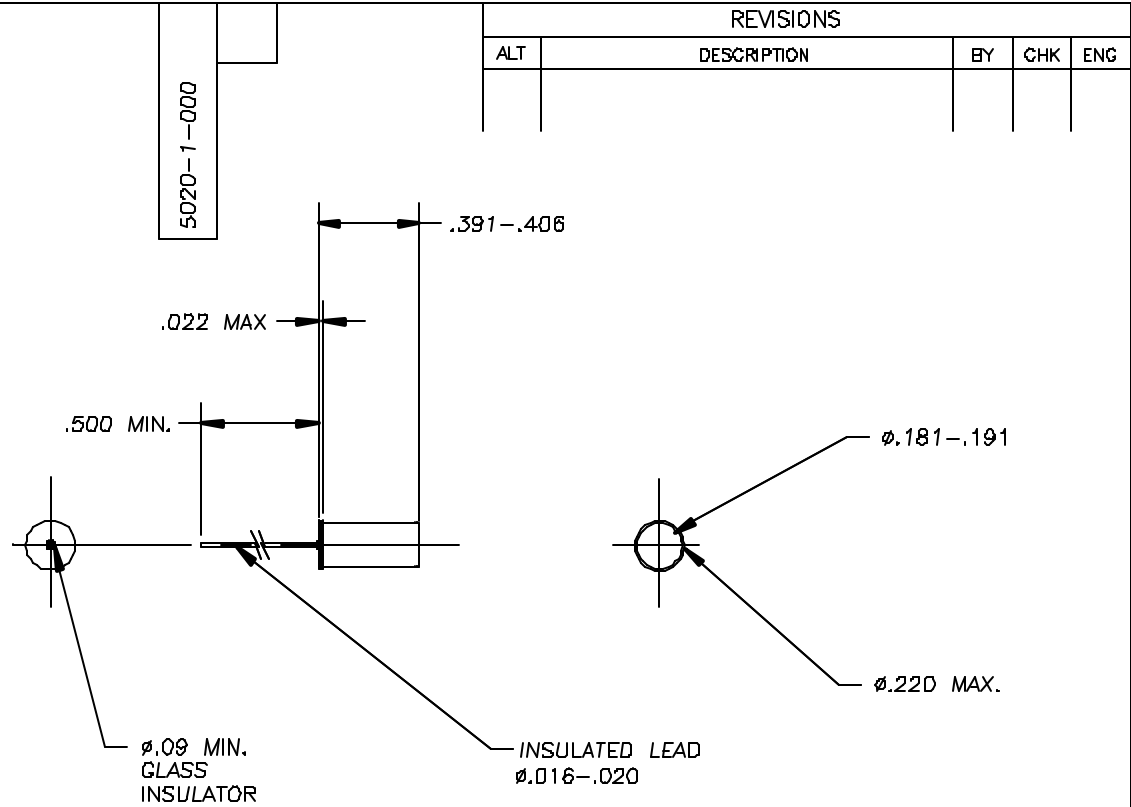



THIS DOCUMENT IS THE PROPERTY OF SELECT CONTROLS INCORPORATED AND IS CONVEYED WITH THE EXPRESS CONDITION THAT IT AND THE INFORMATION CONTAINED IN IT ARE NOT TO BE USED, DISCLOSED, OR REPRODUCED IN WHOLE OR IN PART, FOR ANY PURPOSE WITHOUT THE EXPRESS WRITTEN CONSENT OF SELECT CONTROLS INCORPORATED; AND THAT NO RIGHT IS GRANTED TO DISCLOSE OR SO USE ANY INFORMATION CONTAINED IN SAID DOCUMENT.

1. WEIGHT: 4.0 GRAMS MAXIMUM
2. SENSITIVE TO: TIP-OVER AND/OR TILT
3. CONTACT OPTIONS: NORMALLY OPEN OR NORMALLY CLOSED, CASE GROUND
4. CONTACT SPECIFICATIONS: RATING- 200mA @24 VDC  
RESISTANCE- <350 OHMS
5. INSULATION RESISTANCE: 30 MEGOHMS @ 500 VDC
6. OPERATING CHARACTERISTICS:  
VARIABLE-DEPENDENT ON MOUNTING ANGLE OR ORIENTATION
7. TEMPERATURE: OPERATING -65° TO +185°F  
NON-OPERATING -65° TO +235°F
8. SWITCH IS HERMETICALLY SEALED
9. HEADER LEAD STRENGTH:  
3 POUNDS MINIMUM AXIAL PULL WITHOUT DAMAGE



REVISIONS				
ALT	DESCRIPTION	BY	CHK	ENG

ITEM NO.	NO. REQ'D	PART NO.	DESCRIPTION	REMARKS	
BILL OF MATERIAL					
MATERIAL -----		TITLE SWITCH, TIP-OVER/TILT			
FINISH -----		 350 I CENTRAL AVE. BOHEMIA, N.Y. 11716			
DO NOT SCALE DRAWING REMOVE BURRS, BREAK SHARP EDGES TOLERANCES UNLESS SPECIFIED: FRACT: ± 1/16" ANGLE ± 30° MACH FINISH: --- DEC: .00 ± .00 RHS ✓ DEC: .000 ± .010		NO. REQ'D N/A	NO. REQ'D N/A	SCALE: 2:1	DRAWING NO. 5020-1-000 SHEET 1 OF 1
		WEIGHT: NOTED		DATE 7/2/03	