

THIS DOCUMENT IS THE PROPERTY OF SELECT CONTROLS INCORPORATED AND IS CONVEYED WITH THE EXPRESS CONDITION THAT IT AND THE INFORMATION CONTAINED IN IT ARE NOT TO BE USED, DISCLOSED, OR REPRODUCED IN WHOLE OR IN PART, FOR ANY PURPOSE WITHOUT THE EXPRESS WRITTEN CONSENT OF SELECT CONTROLS INCORPORATED; AND THAT NO RIGHT IS GRANTED TO DISCLOSE OR SO USE ANY INFORMATION CONTAINED IN SAID DOCUMENT.

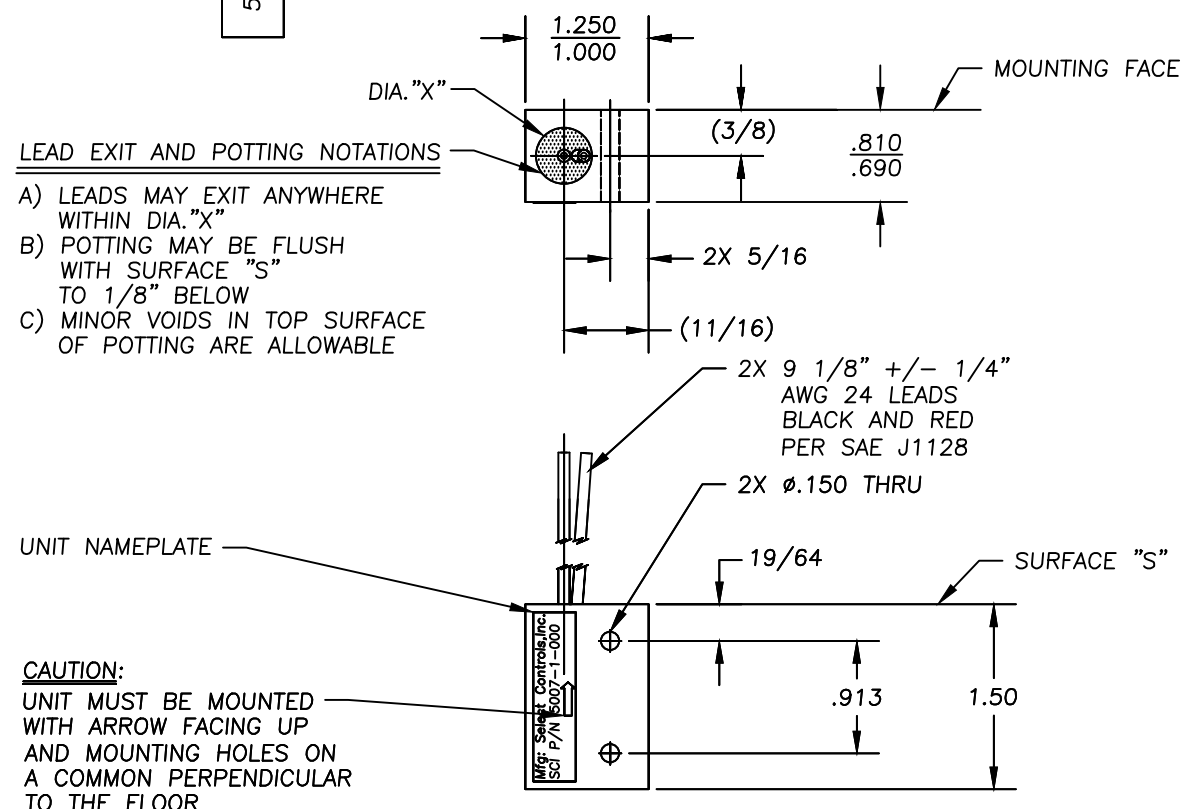
NOTES:

1. SWITCH: PLANAR TILT, OMNIDIRECTIONAL, NORMALLY OPEN, AUTOMATICALLY RESETTABLE
2. WEIGHT: 1.5 OUNCES MAX.
3. CONTACTS: SPST, NORMALLY OPEN
4. CONTACT RESISTANCE: 10 OHMS MAXIMUM
5. CONTACT RATING: 250 MA AT 24 VDC
6. INSULATION RESISTANCE: 30 MEGOHMS MINIMUM AT 500 VDC
7. OPERATING CHARACTERISTICS:
 - a) MUST CLOSE WHEN TILTED PAST $45^\circ \pm 5^\circ$ FROM VERTICAL POSITION
 - a) MUST OPEN WHEN RETURNED TO VERTICAL POSITION
8. OPERATING TEMPERATURE RANGE:

-65 DEGREES F TO +220 DEGREES F
9. SWITCH SEAL: HERMETIC

5007-1-000

REVISIONS				
ALT	DESCRIPTION	BY	CHK	ENG
A	REDRAWN SEE ECN5007-1-000A	AHN 1/28/10		



ITEM NO.	NO. REQ'D	PART NO.	DESCRIPTION	REMARKS						
BILL OF MATERIAL										
MATERIAL		TITLE		45-3 KNICKERBOCKER AVE. BOHEMIA, N.Y. 11716						
FINISH		TILT SWITCH, 45° NORMALLY OPEN								
DO NOT SCALE DRAWING REMOVE BURRS, BREAK SHARP EDGES. TOLERANCE UNLESS SPECIFIED: FRAC: ±1/64 ANGLE ±0°30" MACH FINISH: 125/ DEC: .00 ±.010 RMS ✓ DEC: .000 ±.005		NO. REQ'D	N/A	NO. REQ'D	N/A	SCALE: 1:1	DRAWN: AHN	5/28/00	DRAWING NO.	REV
						WEIGHT: NOTED	ENGINEERED		5007-1-000	A
							APPROVED			
								DATE	SHEET 1 OF 1	