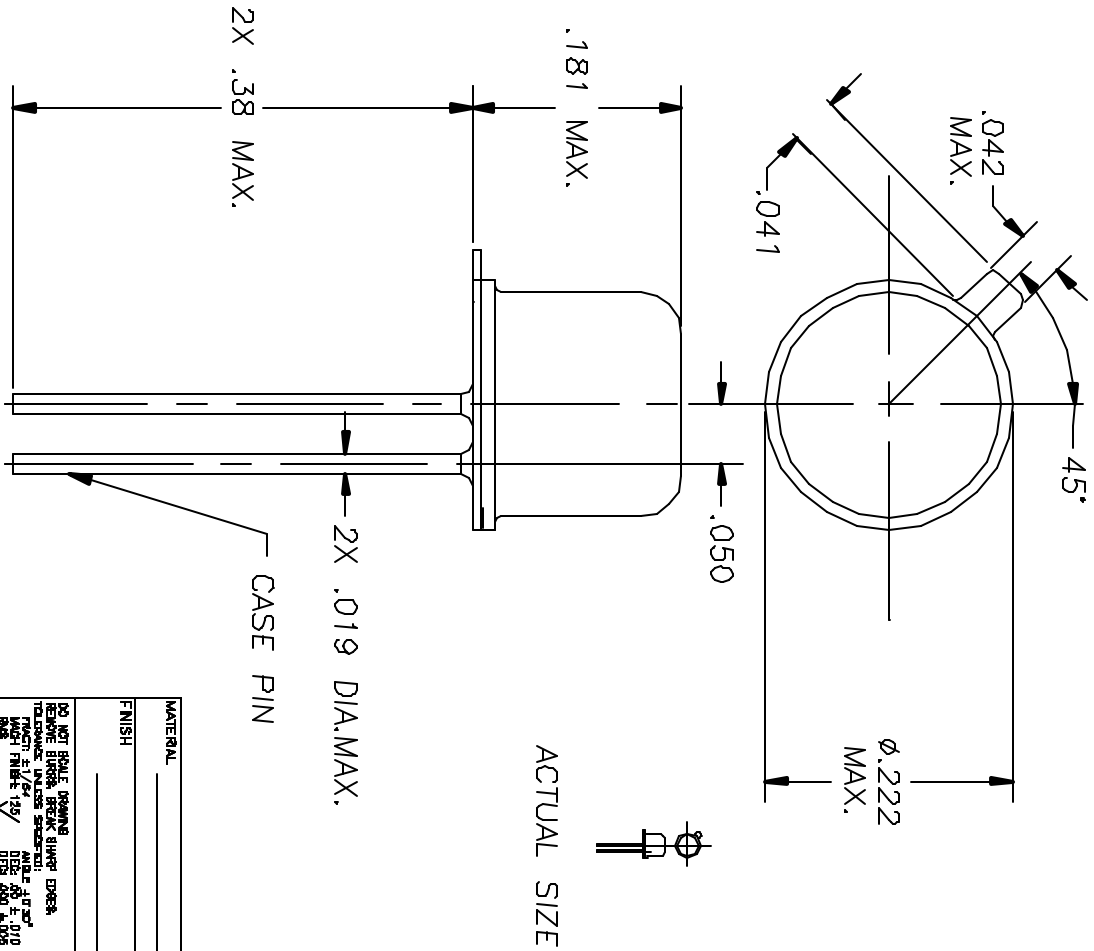


THIS DOCUMENT IS THE PROPERTY OF SELECT CONTROLS INCORPORATED AND IS CONSIDERED CONFIDENTIAL. IT AND THE INFORMATION CONTAINED IN IT ARE NOT TO BE USED, DISCLOSED, OR REPRODUCED IN ANY MANNER WITHOUT THE EXPRESS WRITTEN CONSENT OF SELECT CONTROLS INCORPORATED. AND THAT NO RIGHT IS GRANTED TO DISCLOSE OR REPRODUCE ANY INFORMATION CONTAINED IN SAID DOCUMENT.



3126-DASH NO.-000

REVISIONS			
ALT	DESCRIPTION	BY	CHK
A	SEE ECN 3126-DASH NO.-000A	AN	ENG
		4/4/68	

NOTE:
 1. SWITCH TYPE: SPST, NORMALLY OPEN, MOMENTARY CONTACT, CASE GROUND.
 2. INSULATION RESISTANCE: 400 MEGOHMS MIN. BETWEEN LEADS AT 100 VDC FOR MIN. OF 5 SEC.

3. SWITCH FUNCTION: THE SWITCH SHALL FUNCTION AT SOME INSTANCE WHEN IT IS MOVED A MAX. OF 3 (THREE) TIMES THROUGH AN ANGLE OF 60° (30° FROM BOTH SIDES OF VERTICAL).
 4. WEIGHT: 0.6 GRAMS MAX.

5. SEAL: HERMETIC-LEAK RATE SHALL NOT EXCEED 1 X 10⁻⁶ SCCS HELIUM.

6. CONTACT RATING: 20 MILLIAMPERES AT 9 VDC RESISTIVE LOAD.

7. RANDOM DISTURBANCES (MOTION) IN THE X-Y PLANE CAUSE MOMENTARY SWITCH CLOSURE.

DASH NO.	SENSITIVITY
1	SENSITIVE
2	MORE SENSITIVE
3	VERY SENSITIVE

BILL OF MATERIAL

QTY	DRG	PART NO.	DESCRIPTION	REMARKS

TITLE
 DISTURBANCE SWITCH

S Select Controls Inc.
 45-3 KNICKERBOCKER AVE.
 BOHEMIA, N.Y. 11716

MATERIAL	
FINISH	
DO NOT SHALE DRAWING REMOVE BURRS, BREAK SHARP EDGES, DEBurr, FILE ON SPACES AND ±.002" MAX. FINISH ±.001" RMS	DEC 68 ±.002" MAX. FINISH ±.001" RMS

REV	DATE	BY	CHK	ENG
A	4/29/68	AN	CHK	ENG