

THIS DOCUMENT IS THE PROPERTY OF SELECT CONTROLS INCORPORATED AND IS CONVEYED WITH THE EXPRESS CONDITION THAT IT AND THE INFORMATION CONTAINED IN IT ARE NOT TO BE USED, DISCLOSED, OR REPRODUCED IN WHOLE OR IN PART FOR ANY PURPOSE WITHOUT THE EXPRESS WRITTEN CONSENT OF SELECT CONTROLS INCORPORATED AND THAT NO RIGHT IS GRANTED TO DISCLOSE OR SO USE ANY INFORMATION CONTAINED IN SAID DOCUMENT.

NOTE:

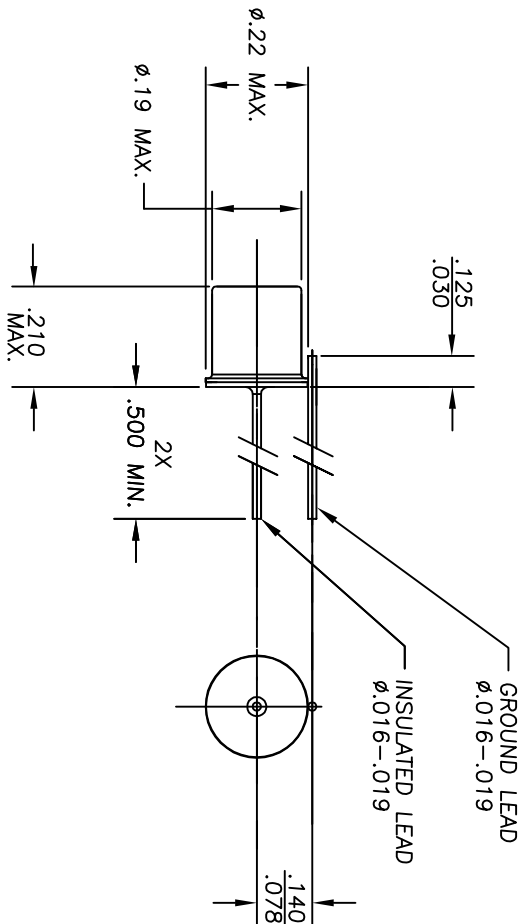
1. SWITCH: CRUSH, NORMALLY OPEN, AUTOMATICALLY LATCHED CLOSED
2. WEIGHT: 2 GRAMS MAXIMUM
3. CONTACTS: SPST, NORMALLY OPEN
4. CONTACT RESISTANCE: 10 OHMS MAXIMUM
5. CONTACT RATING: 250MA AT 28VDC
6. INSULATION RESISTANCE: 30 MEGOHMS MINIMUM AT 500VDC
7. OPERATING CHARACTERISTICS:
 - a) SWITCH LATCHED CLOSED UPON CRUSHING OF CAN.
 - b) LATCH CLOSED CONDITION REQUIRES A DISPLACEMENT OF APPROX. 0.033 INCHES USING APPROX. 400 LBS.
8. TEMPERATURE RANGE:
 - a) OPERATING: -65°F TO +185°F
 - b) NON-OPERATING: -65°F TO+221°F
9. SWITCH SEAL: HERMETIC; LEAKAGE SHALL NOT EXCEED 1 X 10⁻⁶ SCCS He AT 1 ATM.
10. LEAD STRENGTH: 3 LBS. MINIMUM AXIAL PULL.
11. SOLDERABILITY: PER MIL-STD-202, METHOD 208.

3061-1-000

B

REVISIONS

ALT	DESCRIPTION	BY	CHK	ENG
B	SEE ECN3061-1-000B, REDRAWN	AHN		
		4/11/16		



MATERIAL		TITLE		PART NO.		DESCRIPTION		REMARKS	
FINISH		SWITCH, CRUSH		N/A		N.O.-LATCHED CLOSED		45-3 KNICKERBOCKER AVE.	
NO NOT SOLD DRAWING		SCALE: 4:1		WEIGHT:		DRAWING NO.		REV	
BEFORE SHIP, BREAK SHARP EDGES.		TOLERANCE UNLESS SPECIFIED:		FRACTION: 3/64		ANGLE: 40°±30°		DATE	
MACH FINISH: 125/		DEC: .005 ±.01		DEC: .002 ±.005		3061-1-000		SHEET 1 OF 1	
APPROVED		AHN		9/15/06		3061-1-000		B	
SELECT CONTROLS INC.		BOHEMIA, N.Y. 11716							