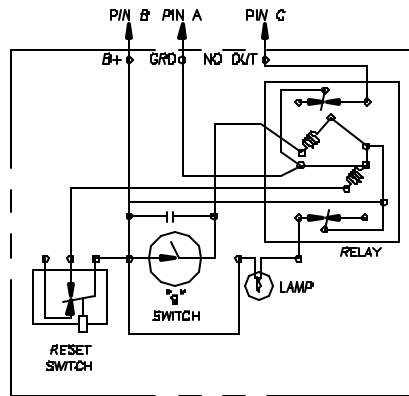
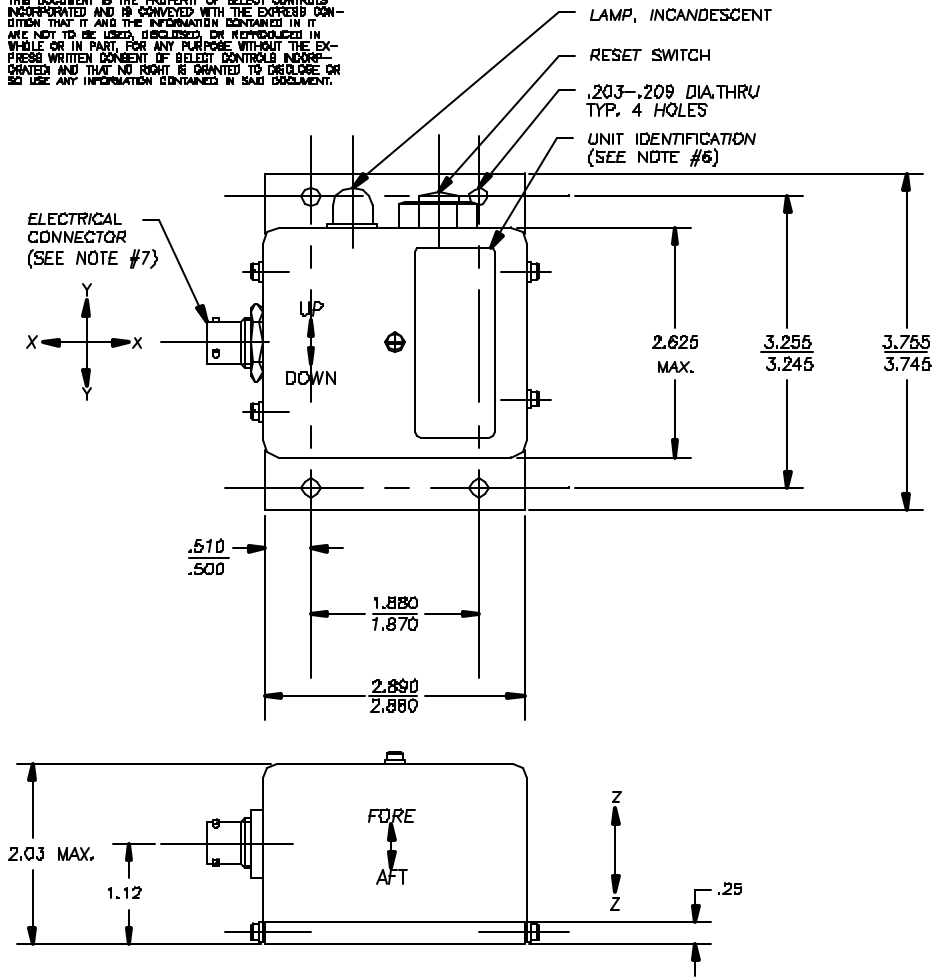


THIS DOCUMENT IS THE PROPERTY OF SELECT CONTROLS INCORPORATED AND IS LOANED TO YOU WITH THE EXPRESS UNDERSTANDING THAT IT AND THE INFORMATION CONTAINED IN IT ARE NOT TO BE USED, REPRODUCED, OR REPRODUCED IN WHOLE OR IN PART, FOR ANY PURPOSE WITHOUT THE EXPRESS WRITTEN CONSENT OF SELECT CONTROLS INCORPORATED AND THAT NO RIGHT IS GRANTED TO DISCLOSE OR TO USE ANY INFORMATION CONTAINED IN SAID DOCUMENT.



CIRCUIT SCHEMATIC  
(SHOWN AFTER OPERATION OF RESET SWITCH)

REVISIONS				
ALT	DESCRIPTION	BY	CHK	ENG

- NOTE:
- WEIGHT: 300 GRAMS MAX.
  - OPERATING VOLTAGE: 28 +/- 4 VDC
  - OPERATION:
    - OPERATION OF THE RESET SWITCH CLOSSES THE N.C. RELAY CONTACTS SO THAT THE LAMP GOES "OFF" AND THE SWITCHED OUTPUT IS "OFF" (OPEN CIRCUIT)
    - OPERATION OF THE "g" SWITCH CAUSES THE N.O. RELAY CONTACTS TO CLOSE (THE N.C. CONTACTS OPEN) SO THAT LAMP IS "ON" AND THE SWITCHED OUTPUT IS "ON" (CONNECTED TO GROUND).
  - LATCHING RELAY CHARACTERISTICS:
    - TYPE: DOUBLE WINDING, PLASTIC SEALED
    - CONTACTS: DPDT, BIFURCATED CROSS BAR, SILVER (AG) CONTACT.
    - CONTACT RATING: 5.0 AMPERES MOMENTARY AT 24 VDC  
2.0 AMPERES RESISTIVE AT 24 VDC  
2.0 AMPERES INDUCTIVE AT 24 VDC
  - "g" SWITCH:
    - HERMETICALLY SEALED; PLANAR
    - INSENSITIVE ALONG Y-Y AXIS
    - SWITCH CONTACTS CLOSE AT 5.0 "g" +/- 10% WHEN APPLIED IN ANY DIRECTION IN THE X-Z PLANE
  - UNIT IDENTIFICATION:  
NAMEPLATE SHALL INCLUDE:  
IMPACT SWITCH  
S/N  
MFG. SELECT CONTROLS INC.  
CODE IDENT. 1JB59  
MFG. P/N 2098-3-000
  - ELECTRICAL CONNECTOR: MS3114E833P
  - LAMP: DIALIGHT - INCANDESCENT INDICATOR - RED  
MS25256-6, TYPE 162-8430-09J1-502 RED LAMP  
-TYPE 327, SIZE T-1 3/4, 28V, .040 AMP.

2098-3-000

REV	DATE	PART NO.	DESCRIPTION	REMARKS
BILL OF MATERIAL				
MATERIAL		TITLE		
FINISH		SWITCH, IMPACT		
<small>DO NOT SCALE DIMENSIONS REMOVE DIMENSIONS FROM DRAWING TOLERANCES UNLESS SPECIFIED FRACTIONS &gt; 1/32" MILLI METERS</small>		<small>REV</small> N/A	<small>REV</small> N/A	<small>REV</small> 1=1 NOTED
<small>DO NOT SCALE DIMENSIONS REMOVE DIMENSIONS FROM DRAWING TOLERANCES UNLESS SPECIFIED FRACTIONS &gt; 1/32" MILLI METERS</small>		350 I CENTRAL AVE. BOHEMIA, N.Y. 11716		<small>REV</small> 2098-3-000
<small>DO NOT SCALE DIMENSIONS REMOVE DIMENSIONS FROM DRAWING TOLERANCES UNLESS SPECIFIED FRACTIONS &gt; 1/32" MILLI METERS</small>		<small>REV</small> NOTED	<small>REV</small> 2098-3-000	<small>REV</small> 