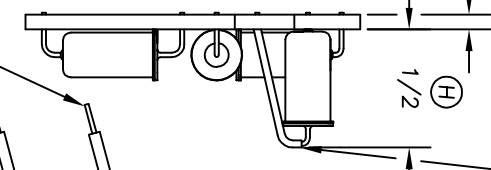
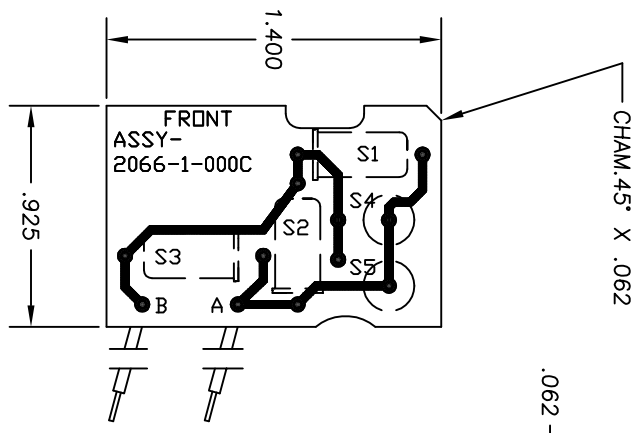
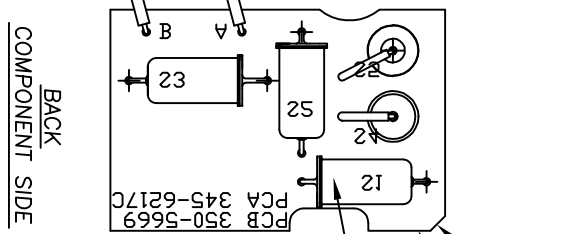


THIS DOCUMENT IS THE PROPERTY OF SELECT CONTROLS INCORPORATED AND IS LOANED TO YOU FOR YOUR INFORMATION ONLY. IT AND THE INFORMATION CONTAINED IN IT ARE NOT TO BE USED, DISCLOSED, OR REPRODUCED IN WHOLE OR IN PART, FOR ANY PURPOSE WITHOUT THE EXPRESS WRITTEN CONSENT OF SELECT CONTROLS INCORPORATED, AND THAT NO RIGHT IS GRANTED TO DISCLOSE OR SO USE ANY INFORMATION CONTAINED IN SAID DOCUMENT.



(A) 2X
 Ø5/64" X 1/2" LG.
 HEATSHRINK TUBING,
 COLOR BLACK



2066-1-100
 PRINTED CIRCUIT BOARD

5X
 2065-2-000
 SWITCH, ACCELERATION
 NORMALLY OPEN
 (SEE NOTE #1)

2066-1-000

REVISIONS			
REV	DESCRIPTION	BY	CHK
E	REDRAWN, SEE ECN 2066-1-000E	AHN	11/77/01
F	SEE ECN 2066-1-000F	AHN	12/6/05
G	SEE ECN 2066-1-000G	AHN	5/14/08
H	SEE ECN 2066-1-000H	AHN	8/1/09

NOTES:

1. ACCELERATION SWITCHES TESTED IN ACCORDANCE WITH SELECT CONTROLS, INC. ATP-2065.
2. ALL DIMENSIONS AND CALLOUTS IN FIELD OF DRAWING ARE FOR REFERENCE ONLY.

(F) 12" LONG
 #22 AWG, TEFLON WIRE,
 COLOR RED

12" LONG
 #22 AWG, TEFLON WIRE,
 COLOR BLACK

MATERIAL	
FINISH	
NO. OF SOLE DRAWING	SHARP EDGES.
REWORK	ANGLE: ±0°30'
TOLERANCE UNLESS SPECIFIED	DEC: .005 ±.010
MACH FINISH: 125	DEC: .005 ±.005

TITLE		ENVELOPE DRAWING		SCALE: 2:1		DRAWING NO.	
"g" SWITCH BOARD ASS'Y.		ASSEMBLY		WEIGHT:		2066-1-000	
PART NO.		DESCRIPTION		DATE		SHEET 1 OF 1	
2066-1-000		45-3 KNICKERBOCKER AVE.		5/89		2066-1-000	
DRAWING APPROVED		BOHEMIA, N.Y. 11716		APPROVED		REV	
H		H		H		H	



45-3 KNICKERBOCKER AVE.
 BOHEMIA, N.Y. 11716