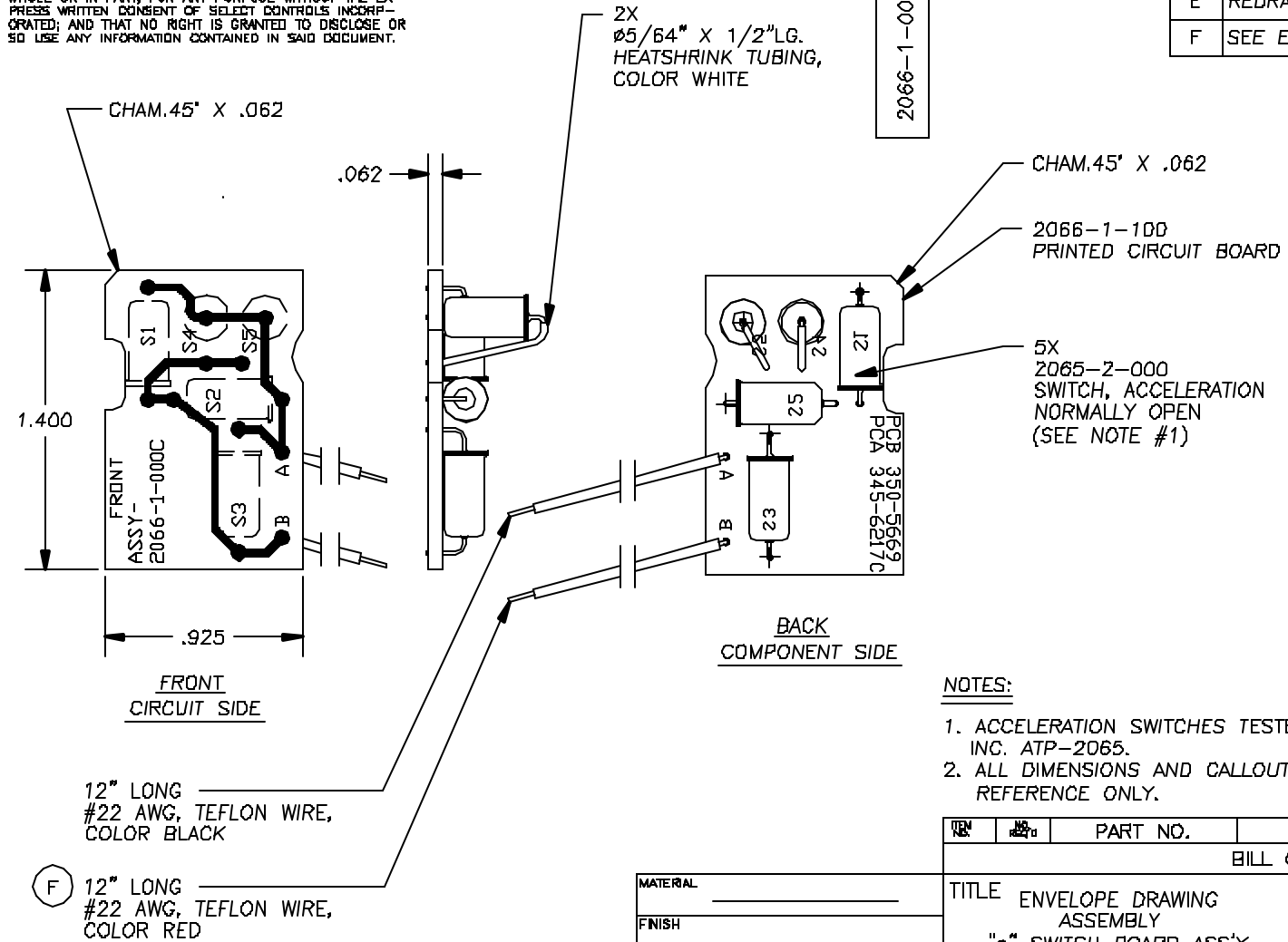



THIS DOCUMENT IS THE PROPERTY OF SELECT CONTROLS INCORPORATED AND IS CONVEYED WITH THE EXPRESS CONDITION THAT IT AND THE INFORMATION CONTAINED IN IT ARE NOT TO BE USED, DISCLOSED, OR REPRODUCED IN WHOLE OR IN PART, FOR ANY PURPOSE WITHOUT THE EXPRESS WRITTEN CONSENT OF SELECT CONTROLS INCORPORATED; AND THAT NO RIGHT IS GRANTED TO DISCLOSE OR SO USE ANY INFORMATION CONTAINED IN SAID DOCUMENT.



REVISIONS				
	DESCRIPTION	BY	CHK	ENG
E	REDRAWN, SEE ECN2066-1-000E	AHN 11/17/97		
F	SEE ECN2066-1-000F	AHN 12/6/98		

NOTES:

1. ACCELERATION SWITCHES TESTED IN ACCORDANCE WITH SELECT CONTROLS, INC. ATP-2065.
2. ALL DIMENSIONS AND CALLOUTS IN FIELD OF DRAWING ARE FOR REFERENCE ONLY.

ITEM	NO.	PART NO.	DESCRIPTION	REMARKS
BILL OF MATERIAL				
TITLE			45-3 KNICKERBOCKER AVE. BOHEMIA, N.Y. 11716	
ENVELOPE DRAWING ASSEMBLY "g" SWITCH BOARD ASS'Y.				
DRAWING NO.				
SCALE: 2:1			DRAWING NO. 2066-1-000	
WEIGHT:			REV F	
DATE			SHEET 1 OF 1	

MATERIAL _____
FINISH _____

DO NOT SCALE DRAWING
REMOVE BURRS, BREAK SHARP EDGES
TOLERANCES UNLESS SPECIFIED:
FRACTIONS: ±1/64" ANGLE: ±0.30°
MACH FINISH: 125/ RFB DEC: 88 ±.010 DEC: 900 ±.006